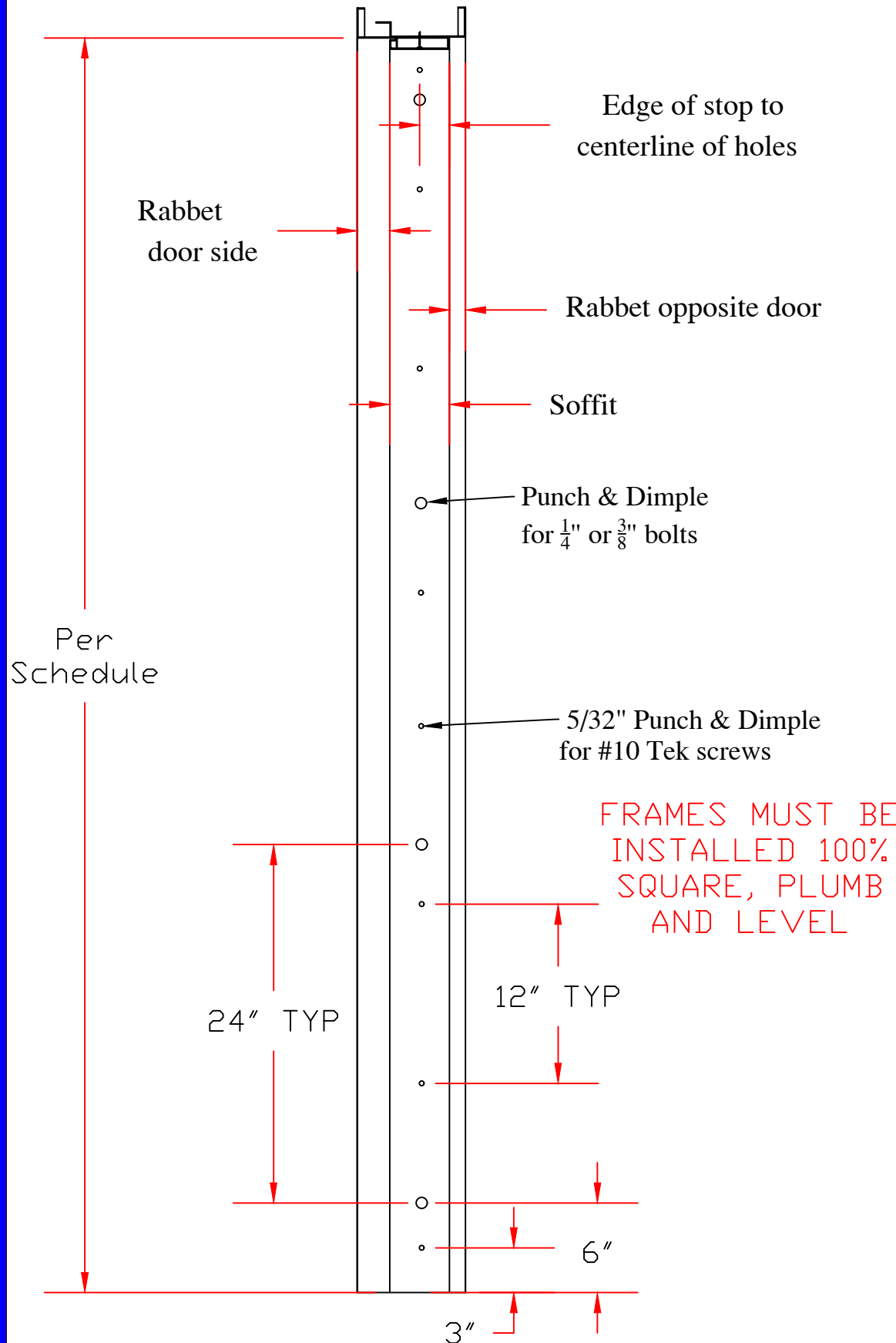


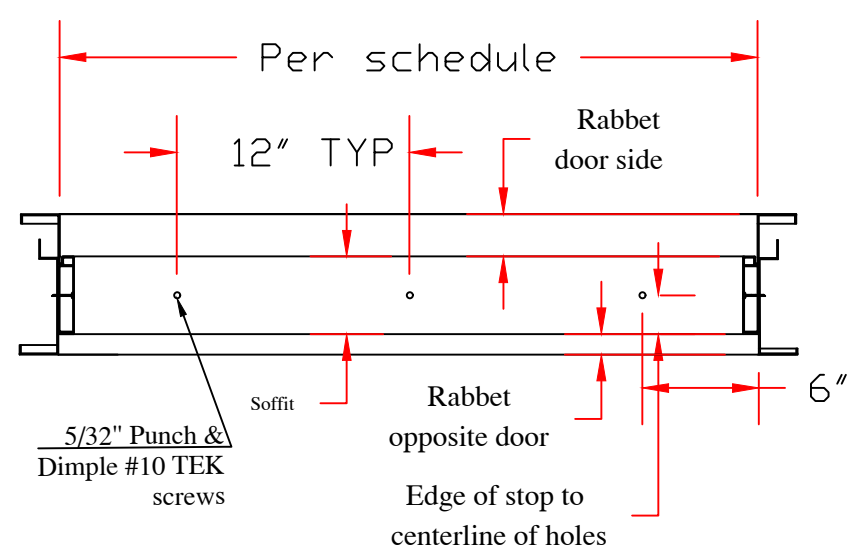
MegaFlex Jamb



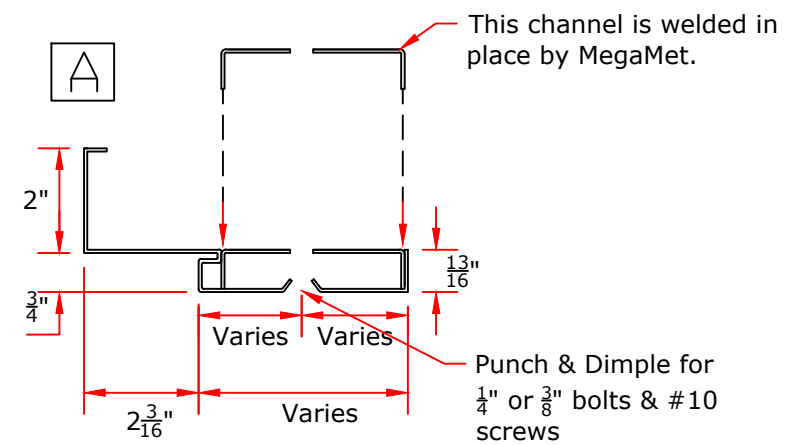
Prepped per hardware schedule

FRAMES MUST BE INSTALLED 100% SQUARE, PLUMB AND LEVEL

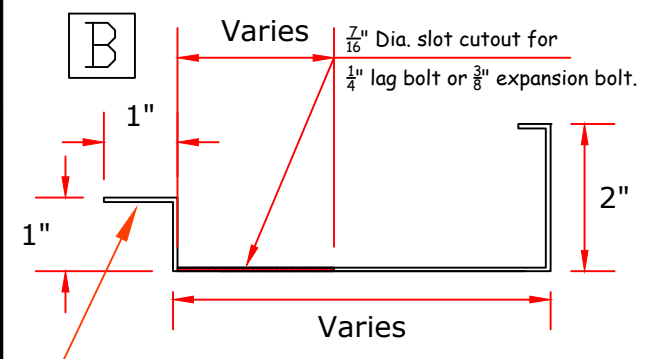
MegaFlex Head



Part - A



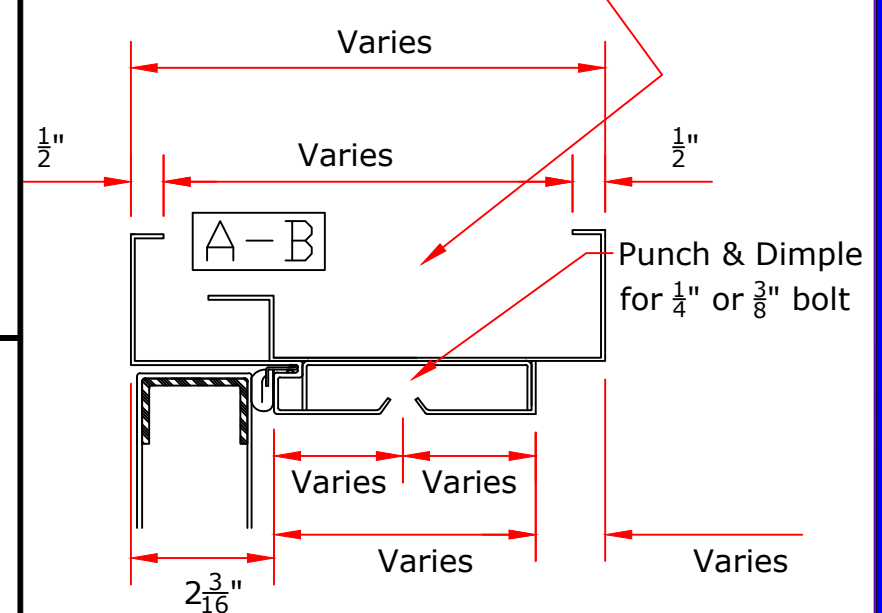
Part - B



STIFFENER LEG ON PART B IS SIZED ACCORDING TO ROUGH OPENING SIZE. 1" LEG MAKES ROUGH OPENING 2-1/2" wider X 1 1/4" taller than door opening size.

MegaFlex Profile

Typical for all STC frames:
Throat of frame to be insulated with same acoustical material used in acoustical walls (min. 8 # insulation). Installer to pay special attention to insulate voids around hardware preps to prevent noise flanking.



- 14 Gauge steel
- Installation requires sliding part A and B together and installing #10 TEK screws in the provided holes.
- Install 1/4" lag bolts or 3/8" expansion bolts into punch & dimple holes provided in jambs only.
- Expansion bolts and lag bolts by provided by others. #10 TEK screws provided by MegaMet.
- Finish hardware provided by others.

ALL PART A PIECES WILL BE WELDED TOGETHER AND ALL PART B WILL BE WELDED TOGETHER - BUT PART A WILL NOT BE WELDED TO PART B.

Amount of throat adjustment is variable depending upon jamb depth ordered.

TOLERANCE ON ALL DIMENSIONS UNLESS OTHERWISE SPECIFIED FRACTIONAL ± 3/32" DECIMAL ± 0.0937

CUSTOMER:	
ARCHITECT:	
CONTRACTOR:	

ALL INFORMATION CONTAINED IN THIS DISCLOSURE WHETHER PATENTABLE OR OTHERWISE COMPRISES PROPRIETARY INFORMATION OF MEGAMET INDUSTRIES, INC. AND ITS UNAUTHORIZED USE OR PUBLICATION WITHOUT THE EXPRESS CONSENT OF MEGAMET INDUSTRIES, INC. IS STRICTLY PROHIBITED.

Manufactured by
MEGAMET INDUSTRIES, INC.
 Birmingham, Alabama

NAME	Split Frame Details
DRAWN	Mondragon D.
CHECKED	
APPROVED	

DATE	11/12/2018
SCALE	NONE
PROJECT	